

# PMDT<sup>®</sup>

Fluoro-immunoassay quantitative detection system

Profession

Accuracy

Efficiency

## Feature Detection kits

REGISTERED QC FOR ALL TESTING KITS

- 25-hydroxy vitamin D (25-OH-VD)
- Ferritin (FER)
- N-MID Ostercalcin (N-MID)
- Anti-Mullerian Hormone (AMH)
- Follic Acid (FA)
- Serum Amyloid A/C-Reactive Protein (SAA/CRP)
- Soluble growth STimulation expressed gene 2/ N-terminal pro-B-type natriuretic peptide (sST2/NT-proBNP)
- Gastrin 17 (G17)

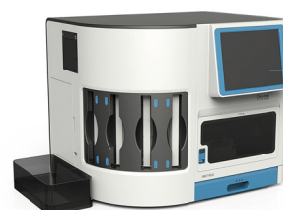
PMDT9100



PMDT9000



PMDT9800



For more intelligent POCT  
For more professional service



# PMDT<sup>®</sup> Fluoro-immunoassay quantitative detection

100+ countries covered    suitable for various clinic situations



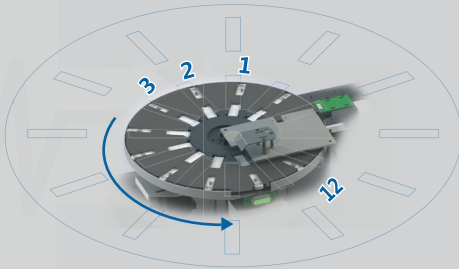
## better designed POCT

- ◆ steady structure for reliable results
- ◆ auto alert to clean polluted cassettes
- ◆ 9'screen, manipulation friendly
- ◆ various ways of data exporting
- ◆ full IP of testing system and kits



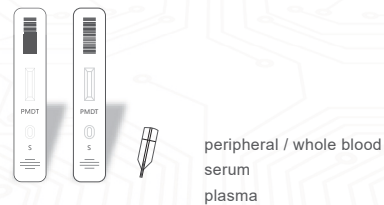
## more accurate POCT

- ◆ high-precision testing parts
- ◆ independent testing tunnels
- ◆ temperature & humidity auto-control
- ◆ auto QC and self-checking
- ◆ reacting time auto-control
- ◆ auto-saving data



## more efficient POCT

- ◆ high-throughput for gargantuan testing needs
- ◆ testing cassettes auto-reading
- ◆ various testing samples available
- ◆ fitting in many emergency situations
- ◆ capable to connect printer directly (special model only)
- ◆ registered QC for all testing kits



## more intelligent POCT

- ◆ registered QC for all testing kits
- ◆ real-time monitoring of every tunnels
- ◆ touch-screen instead of mouse and keyboard
- ◆ AI chip for data management

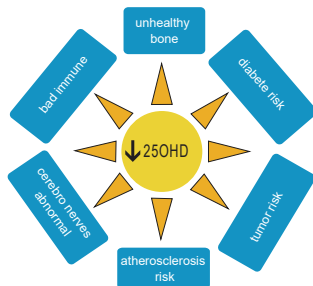




### special check for maternal & children: 25-OH-VD+FER+N-MID

#### 25-OH-VD

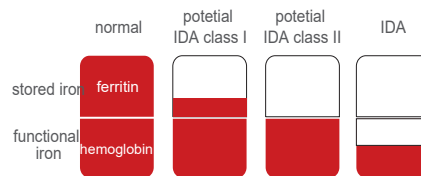
important vitamin for bone health



- ♦ vitamin D is related to bone health
- ♦ vitamin D also suggests condition of immune system, reproductive system and cardiovascular system.
- ♦ 25-OH-VD applies for evaluation of VD level of maternal, children and aged populations.

#### FER

Iron Deficiency Anemia precaution

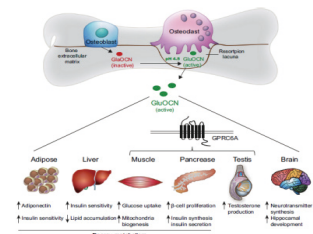


- ♦ accurate iron-storage condition evaluation
- ♦ IDA precaution
- ♦ iron-treatment effect evaluation

#### N-MID

NEW!

osteoporosis precaution and classification



- ♦ bone metabolism situation evaluation
- ♦ suggesting condition of endocrine system

### rapid evaluation of ovarian health: AMH <sup>NEW!</sup>



#### Anti-Müllerian Hormone (AMH)

AMH, a kind of glycoprotein, is produced by granulosa cells of ovary. After the best birthbearing ages or ovary dysfunction, the AMH level in serum would decrease.

#### efficiency

AMH evaluation can directly suggest the capability of ovary.

#### sensitivity

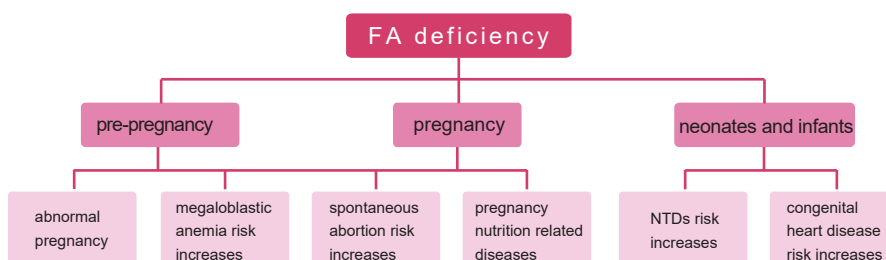
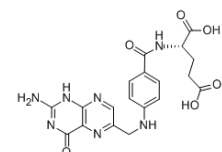
As fertile ability declines, AMH decreases more and earlier than other biomarkers.

#### stability

AMH level is more stable in menstrual cycle.

### necessary vitamin in pregnancy and its preparation: FA <sup>NEW!</sup>

Follic acid/folate (FA) is a kind of vitamins, which is abundant in green vegetable. When absorbed, FA can be reduced to tetrahydrofolate and participate in the synthesis of purine and pyrimidine.



#### function of FA

- ♦ heredity substance metabolism
- ♦ protein metabolism
- ♦ reproductive function
- ♦ immune system

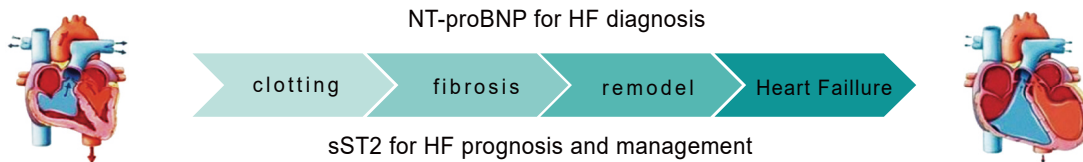
♀ suggested FA testing population: planning on getting pregnant; early & mid trimester of pregnancy; FA supplementation

# cerebro/cardinal vascular testing

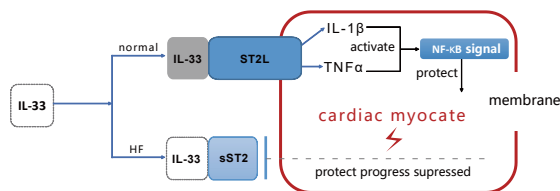
## biomarkers of AMI, HF and cerebral injury

### ❖ sST2/NT-proBNP combo testing for HF all-time management

Recommended by ACCF and AHA for HF diagnosis, prognosis and management



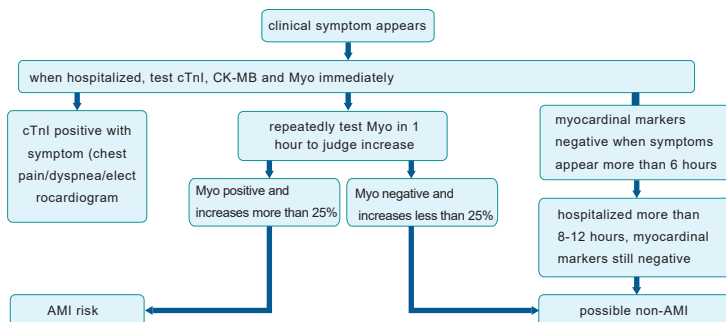
- ◆ When HF diagnosed by NT-proBNP, sST2 level could provide information of prognosis and death risk



- ◆ sST2/NT-proBNP combo testing
- ◆ getting multi-results on single test
- ◆ suitable for serum/plasma/WB samples
- ◆ getting results rapidly

### ❖ Myocardial markers cTnI/CK-MB/Myo

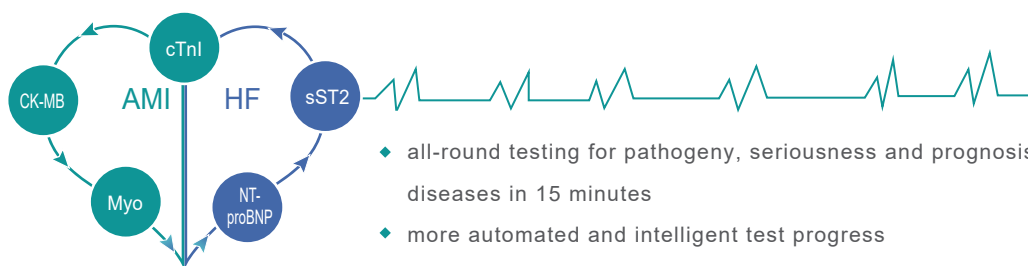
#### diagnosis process



#### features of myocardial markers

	Myoglobin (Myo)	Creatine Kinase-MB (CK-MB)	cardiac Troponin I (cTnI)
dynamics	rises in 1-3 h topped in 6-9 h when illness controlled, back to normal in 24-36 h	rises in 4-6 h topped in 24 h when illness controlled, back to normal in 3 d	rises in 3-6 h topped in 10-12 h when illness controlled, back to normal in 5-15 d
significance	excluding AMI possibility	a) AMI early diagnosis and risk evaluation b) AMI treatment monitoring	a) best marker for AMI diagnosis b) AMI judgement and risk

### ❖ Pro-med myocardial markers penta-testing



- ◆ all-round testing for pathogeny, seriousness and prognosis of cardiac diseases in 15 minutes
- ◆ more automated and intelligent test progress
- ◆ suitable for serum/plasma/WB samples, transportation conditions free

# Testing for inflammation and infection

## SAA/CRP + PCT+IL-6

- ♦ suitable for peripheral blood
- ♦ general testing for inflammation and
- ♦ virus/bacteria infection classification, sepsis/SIRS diagnosis
- ♦ transportation conditions free

### 🔗 suitable markers combination

Department	clinical situation	suitable markers combination
Emergency Department	suspected infection, un-reasoned fever	CRP+SAA
Emergency Department	CAP, upper respiratory tract infection, COPD	CRP+SAA
Pediatrics	un-reasoned fever, upper respiratory tract infection	CRP+SAA
Gastroenterology Department	acute appendicitis, pancreatitis, cholecystitis	CRP+SAA
Neonatology Department	SIRS, sepsis, severe inflammation	PCT+SAA+IL-6
ICU	inflammation and infection monitoring	PCT+SAA+IL-6
Surgical Department	infection monitoring before & after surgery	CRP+SAA or PCT+IL-6+SAA

partial infection: SAA+CRP  
systematic infection: SAA+PCT



## « Diagnostic menu »

- ♦ 25-hydroxy vitamin D (25-OH-VD)
- ♦ Ferritin (FER)
- ♦ N-MID Osteocalcin (N-MID)
- ♦ Anti-Müllerian Hormone (AMH)
- ♦ Folic Acid (FA)
- ♦ Progesterone (PROG)
- ♦ β-Human Chorionic Gonadotropin (β-HCG)
- ♦ inhibin-B (HbA1c)
- ♦ Hemoglobin A1c (INH-B)

Maternal and  
Children  
Health Care

Cerebro-cardinal  
Vasculine

- ♦ Soluble growth stimulation expressed gene 2/N-terminal pro-B-type natriuretic peptide (sST2NT-proBNP)
- ♦ Soluble growth stimulation expressed gene 2 (cTnI/CK-MB/Myo)
- ♦ S100-β protein (S100-β)
- ♦ Soluble growth stimulation expressed gene 2 (sST2)
- ♦ N-terminal pro-B-type natriuretic peptide (NT-proBNP)
- ♦ B-type natriuretic peptic (BNP)
- ♦ Cardiac troponin I (cTnI)
- ♦ D-Dimer (D-Dimer)
- ♦ Lipoprotein-associated phospholipase A2 (Lp-PLA2)
- ♦ Heart-type fatty acid binding protein (H-FABP)

Inflammation  
and Infection

- ♦ Human serum amyloid A protein/C-Reactive Protein (SAA/CRP)
- ♦ Procalcitonin (PCT)
- ♦ Human Serum Amyloid A protein (SAA)
- ♦ C-Reactive Protein (CRP)
- ♦ interleukin-6 (IL-6)

Gastric  
Health

- ♦ Pepsinogen I and pepsinogen II (PGI/II)
- ♦ Gastrin 17 (G17)

# PMDT9100/9000/9800 Fluoroimmunoassay detection platform

Series	Product Name	Abbreviation	Simplified Clinical Significance
Maternal and Children	25-hydroxy vitamin D	25-OH-VD	Health evaluation of bone, immune and endocrine
	Ferritin	FER	Risk evaluation of iron deficiency anemia
	N-MID Osteocalcin	N-MID	Risk evaluation and classification of osteoporosis
	Anti-Müllerian Hormone	AMH	Health evaluation and reaction capability of ovary
	Folic Acid	FA	Risk evaluation of fetal malformation
	Progesterone	PROG	Precaution of abnormal gestation
	β-Human Chorionic Gonadotropin	β-HCG	Pregnancy and gestation condition judgement
	inhibin-B	inh-B	Fertility judgement
	Hemoglobin A1c	HbA1c	Controlling condition of blood glucose
Infection & Inflammation	Human serum amyloid A protein/C-Reactive Protein	SAA/CRP	Simple classification of bacteria and virus infection
	Human Serum Amyloid A protein	SAA	Evaluation of inflammation
	C-Reactive Protein	CRP	Evaluation of inflammation
	Procalcitonin	PCT	Auxiliary diagnosis of severe infection or sepsis
	interleukin-6	IL-6	Auxiliary diagnosis and prognosis evaluation of sepsis
Cardiac & Cerebral Vascular	Soluble growth stimulation expressed gene 2/N-terminal pro-B-type natriuretic peptide	sST2/NT-proBNP	Detailed management of heart failure
	Soluble growth stimulation expressed gene 2	sST2	Severity and influence Evaluation of heart failure
	N-terminal pro-B-type natriuretic peptide	NT-proBNP	Auxiliary diagnosis of heart failure
	B-type natriuretic peptic	BNP	Auxiliary diagnosis of heart failure
	Cardiac troponin I/Creatine Kinase-MB/Myoglobin	cTnI/CK-MB/Myo	Auxiliary diagnosis of acute myocardial infarction (AMI)
	Cardiac troponin I	cTnI	Auxiliary diagnosis of acute myocardial infarction (AMI)
	D-Dimer	D-Dimer	Auxiliary diagnosis of thrombotic disease
	S100-β protein	S100-β	Auxiliary diagnosis of cerebral injury
	Lipoprotein-associated phospholipase A2	Lp-PLA2	Precaution of atherosclerosis
	Heart-type fatty acid binding protein	H-FABP	Early auxiliary diagnosis of acute myocardial infarction (AMI)
Gastric Health	Pepsinogen I and pepsinogen II	PG I/PG II	Precaution and risk evaluation of severe gastric disease
	Gastrin 17	G17	Precaution and risk evaluation of severe gastric disease

PMDT9000



PMDT9100



PMDT9800



Beijing Pro-med Technology Co., Ltd.

Address: C-3F, 8#, 738 Changliu Road, Machikou Town,  
Changping, 102202, Beijing, China.  
Website: [www.pmdt.com.cn](http://www.pmdt.com.cn)  
Tel: +86 13699171707 +86 13520769713 +86 13811688262

EN ISO13485:2016

