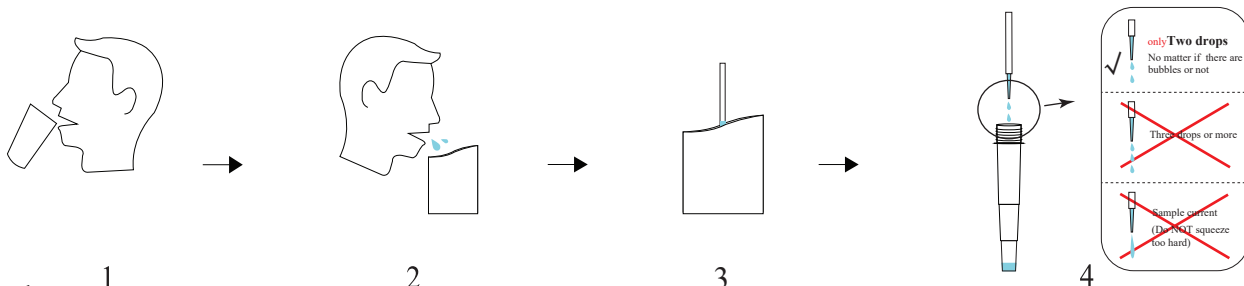


COVID-19 Antigen Rapid Detection Kit (saliva sample)



1
Get ready:
10 minutes before collecting saliva samples, please wash the foreign matters.

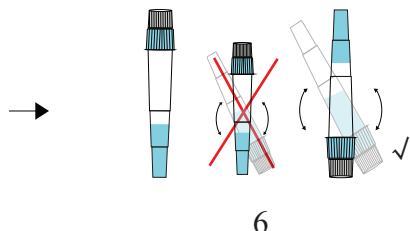
2
Open the paper pouch and directly spit **saliva** into it.
*Saliva, not sputum

3
Use a disposable dropper to absorb the saliva specimen. (No matter if there are bubbles or not)

4
Add 2 drops the saliva specimen into the saliva collection tube. (No matter if the sample drops to the pipe orifice or wall)

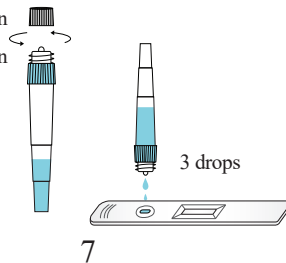


5
Take one sample diluent and add all sample diluent into the saliva collection tube.



6
Cover the saliva collection tube, **turn upside down** and make sure that the saliva is well mixed with the buffer.

Open the cap on the top of the saliva collection tube.



7
Add 3 drops processed sample into the sampling well of cassette.



Tel: +86-13699171707

Address: C-3F, 8#, 738 Changliu Road, Machikou
Town, Changping, 102202, Beijing, China.

Website: www.pro-med.com.cn



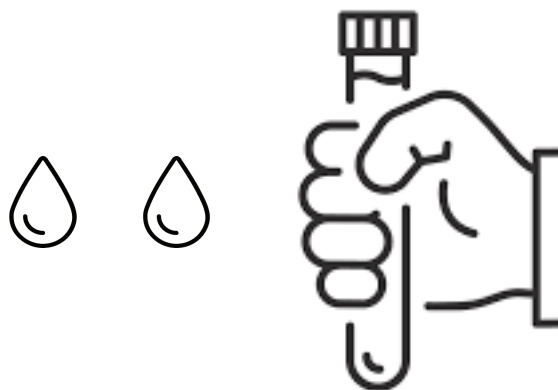
Pro-med
technology 普迈德



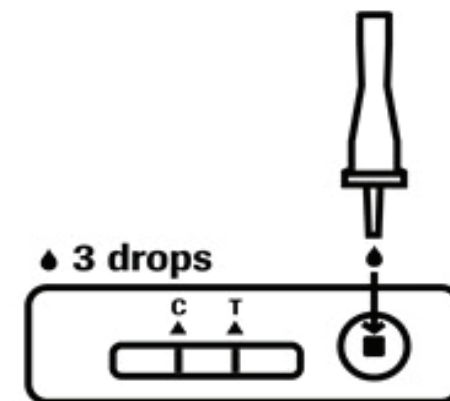
Tik if you do



Mouthwash before collection saliva

☐

Add only 2 drops saliva into the saliva collection tube

☐

3 drops sample into the sampling well of cassette

☐