

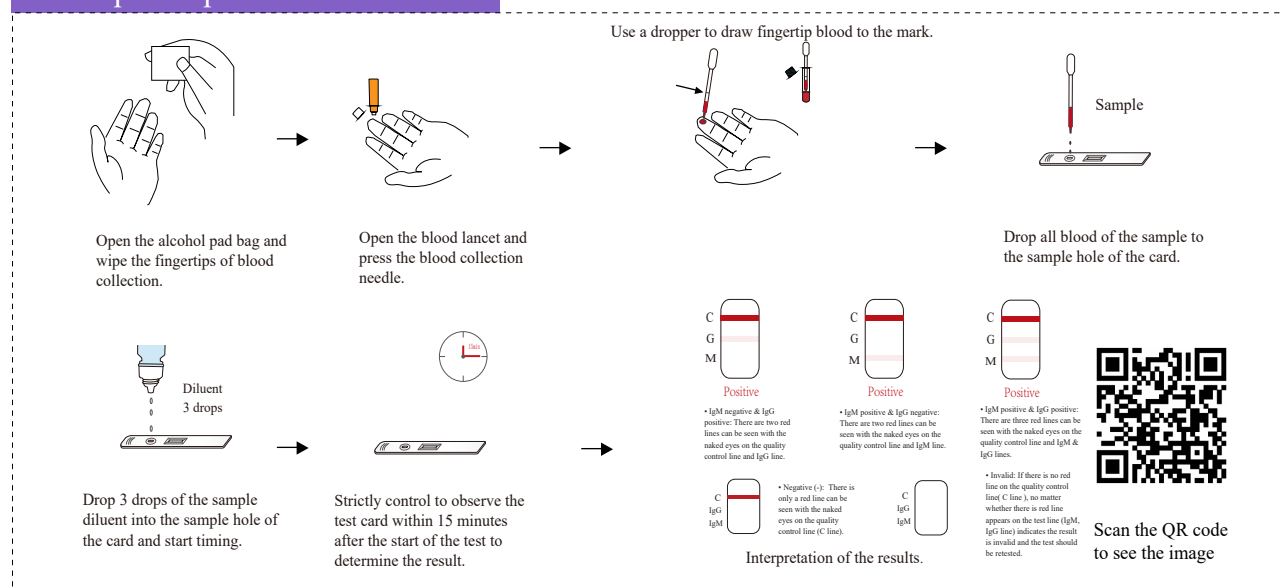
## COVID-19 IgM/IgG Antibody Rapid Detection

The kit can be used as a supplementary test index for suspected cases with a negative nucleic acid test for the SARS-CoV-2 or used in conjunction with nucleic acid or antigen detection in the diagnosis of suspected cases.



Art No.	Specimen Type	Sensitivity	Specificity	Packing Size	Box size(cm)	Box weight(g)	CTN
PMD501	Serum / Plasma	IgG:92.68%	IgG:98.66%	1 T/kit	12.5*2.5*8	34g	52.5*52.5*44(500T)
PMD502	Whole blood	IgM:88.62%	IgM:97.99%	20 T/kit	17*12.5*7	268g	38.5*38.5*67(1000T)

### Sample Preparation & Results



Qualifications

European CE ✓

ISO13485 ✓

Chinese Whitelist ✓